



SHANTHI
ASSOCIATES
WE BUILD YOUR VISION



**Building Excellence for 34 Years
Crafting Over 350 Dreams into Reality**

About Us

At Shanthy Associates, we don't just build structures; we create homes, redefine spaces, and turn visions into reality. With an illustrious 34-year legacy, we have successfully delivered over 350 projects across residential, commercial, and community sectors.

Our Mission

Empowering dreams and building trust through excellence, transparency, and innovation

Why Choose Us?

Experienced Team: Expert architects, engineers, and designers.

Client-Centric Approach: Your vision, our priority.

Innovation & Sustainability: Latest technology for lasting impact.

Commitment to Quality & Timeliness: Delivering excellence on schedule.

OUR SERVICES

Comprehensive Construction Solutions
Tailored to Your Vision



Sub Structure Construction

Isolated Footing | Pile Foundation
Raft Foundation



Super Structure Design & Construction

Custom Architectural Designs
Structural Engineering | Interior
Designing



Infrastructure & Amenities Development

Advanced Amenities | Holistic Development | Project Management
Consultation

WHY SHANTHI ASSOCIATES?

Innovative Designs: Merging tradition with modern aesthetics.

Precision & Quality: Uncompromised commitment to durability.

Client Satisfaction: Your happiness defines our success.

OUR PROJECTS

Each of our projects is a testimony to quality innovation, and customer satisfaction.



OUR PROJECTS

Each of our projects is a testimony to quality innovation, and customer satisfaction.



chandramohan
Part & Bloom



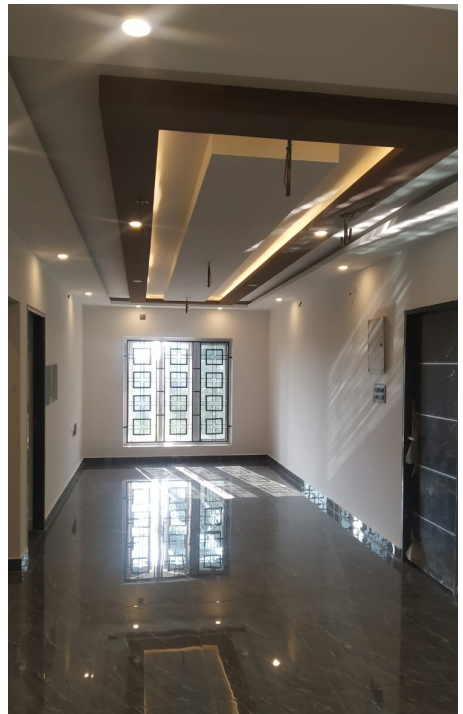
OUR PROJECTS

Each of our projects is a testimony to quality innovation, and customer satisfaction.



OUR PROJECTS

Each of our projects is a testimony to quality innovation, and customer satisfaction.



“Let's Build Your Dreams Together”

CONTACT **US**



+91 98945 84966



info@shanthiassociates.com
www.shanthiassociates.com



F1, Himadri, Plot no 700,
6th main road, Ram Nagar south,
Madipakkam, Chennai - 600091

